

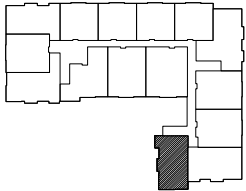
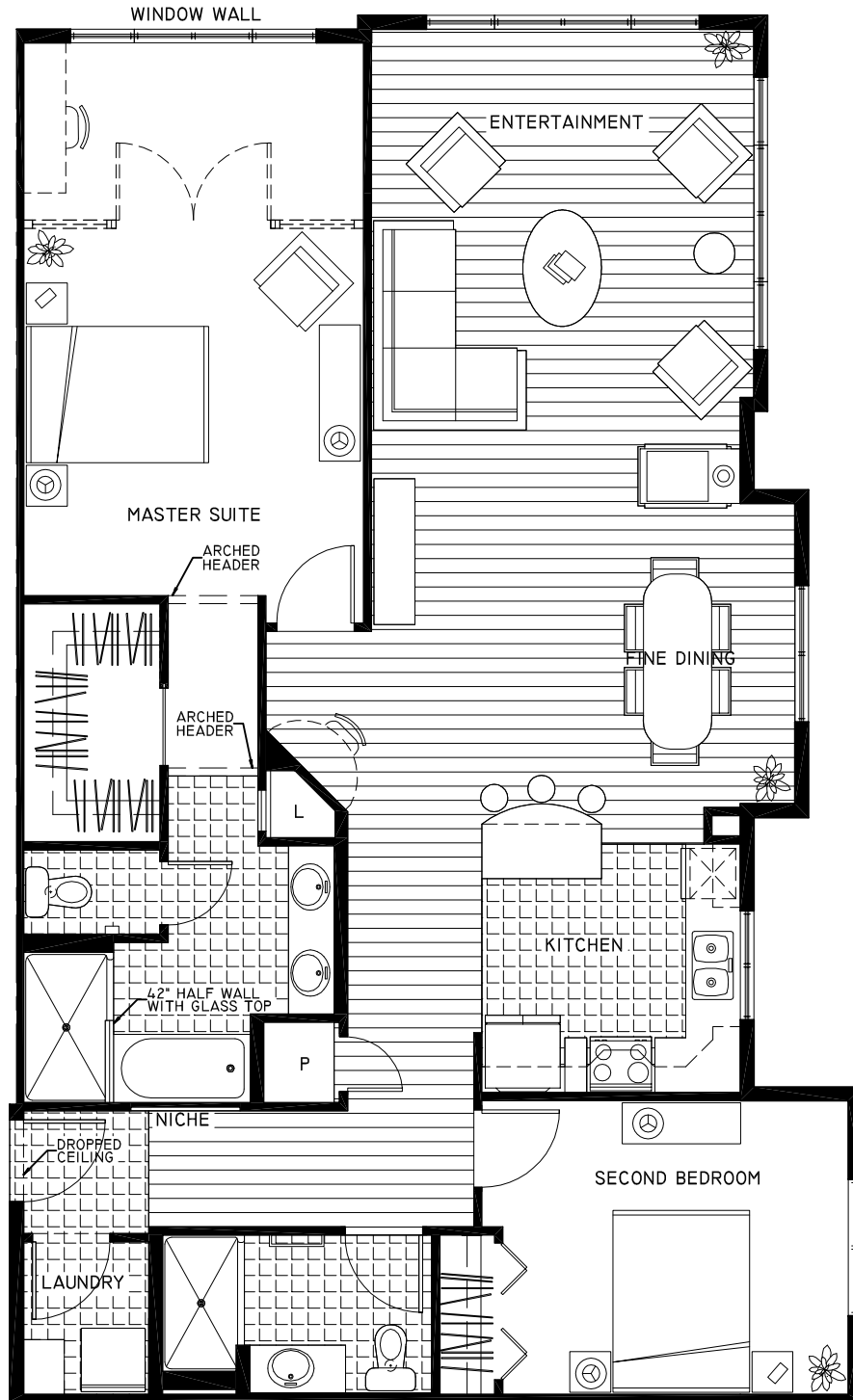


**BENTLEY**  
HOUSE

**CASCADE 5**  
**1444 S.F.**

(2-BEDROOM &  
2-BATH)

**UNITS**  
**203,**  
**303**



**FLOORING**  
**LEGEND**

	TILE
	CARPET
	HARDWOOD

**OPTIONS**

- BUILT-IN DESK (MASTER)
- FRENCH DOORS (MASTER)
- BUILT-IN DESK (DINING)
- TEMPERED GLASS PANELS (M)

**ROOM SIZES**

ENTERTAINMENT	13'-11" x 17'-3"
MASTER SUITE	12'-4" x 20'-2"
SECOND BEDROOM	12'-6" x 10'-8"
KITCHEN	9'-4" x 9'-0"
FINE DINING	11'-4" x 10'-11"
LAUNDRY	4'-6" x 5'-6"

THESE PLANS ARE FOR MARKETING PURPOSES ONLY. THE SELLER RESERVES THE RIGHT TO MODIFY THE INTERIOR AND EXTERIOR DESIGN SPECIFICATIONS, LOCATION, SIZE, DESIGN FEATURES, SERVICES, AMENITIES AND PRICING WITHOUT PRIOR NOTICE. ALL DIMENSIONS AND SQUARE FOOTAGES ARE APPROXIMATE AND MODIFICATIONS MAY VARY BY UNIT.



2700 N.W. Pine Cone Drive, Issaquah, WA, 98027  
Telephone: (425) 830-8971 [www.bentleyhousing.com](http://www.bentleyhousing.com)

11-17-08

