



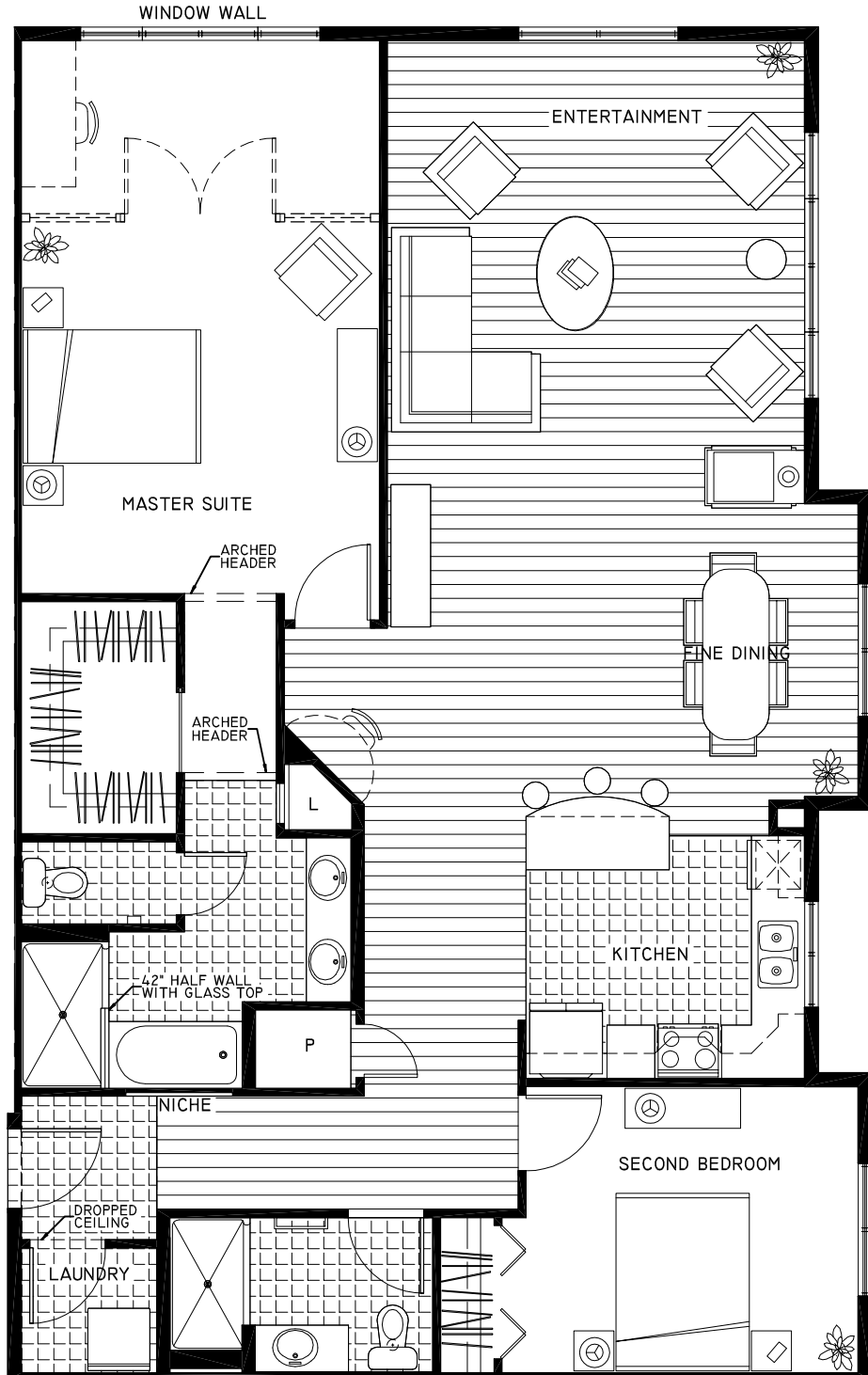
BENTLEY HOUSE

CASCADE 3 1580 S.F.

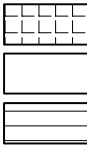
(2-BEDROOM &
2-BATH)

UNITS

204,
304



FLOORING LEGEND



TILE
CARPET
HARDWOOD

OPTIONS

- FRENCH DOORS (MASTER)
- BUILT-IN DESK (MASTER)
- BUILT-IN DESK (DINING)
- TEMPERED GLASS PANES (M)

ROOM SIZES

ENTERTAINMENT	15'-7"x 17'-3"
MASTER SUITE	13'-4"x 20'-8"
SECOND BEDROOM	13'-3"x 10'-8"
KITCHEN	9'-4"x 9'-0"
FINE DINING	12'-4"x 10'-11"
LAUNDRY	5'-0"x 4'-7"

THESE PLANS ARE FOR MARKETING PURPOSES ONLY. THE SELLER RESERVES THE RIGHT TO MODIFY THE INTERIOR AND EXTERIOR DESIGN SPECIFICATIONS, LOCATION, SIZE, DESIGN FEATURES, SERVICES, AMENITIES AND PRICING WITHOUT PRIOR NOTICE. ALL DIMENSIONS AND SQUARE FOOTAGES ARE APPROXIMATE AND MODIFICATIONS MAY VARY BY UNIT.

STATESMAN
what a beautiful way to live!

2700 N.W. Pine Cone Drive, Issaquah, WA, 98027
Telephone: (425) 830-8971 www.bentleyhousing.com

11-17-08

