

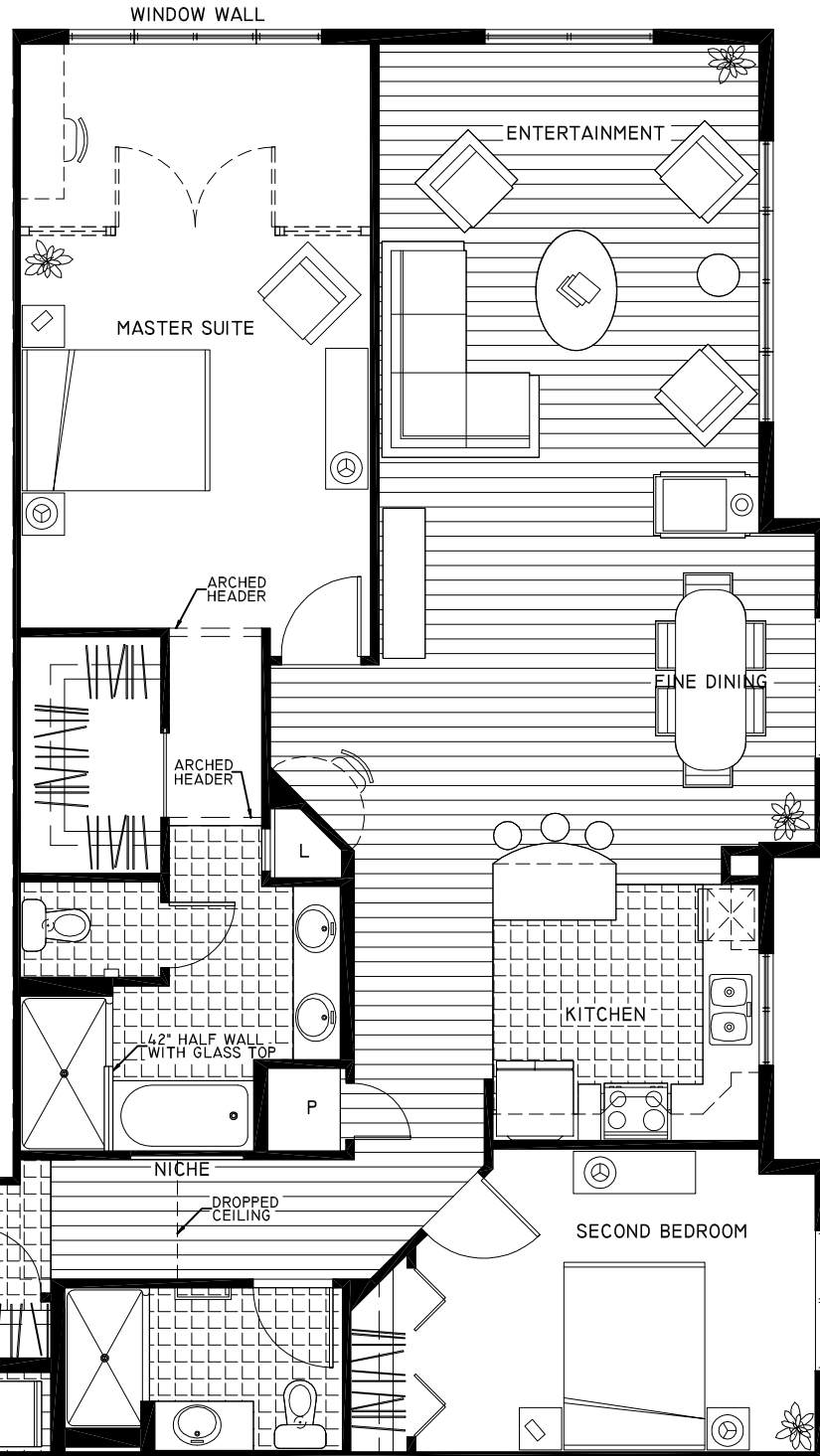


BENTLEY HOUSE

CASCADE 2 1476 S.F.

(2-BEDROOM &
2-BATH)

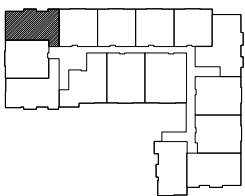
UNITS
212,
312,
408



FLOORING LEGEND	
	TILE
	CARPET
	HARDWOOD

OPTIONS
FRENCH DOORS (MASTER)
BUILT-IN DESK (MASTER)
BUILT-IN DESK (DINING)
TEMPERED GLASS PANELS (M)

ROOM SIZES	
ENTERTAINMENT	13'-5" x 17'-3"
MASTER SUITE	12'-4" x 20'-8"
SECOND BEDROOM	12'-1" x 10'-8"
KITCHEN	9'-4" x 9'-0"
FINE DINING	11'-4" x 10'-11"
LAUNDRY	6'-9" x 2'-9"



THESE PLANS ARE FOR MARKETING PURPOSES ONLY. THE SELLER RESERVES THE RIGHT TO MODIFY THE INTERIOR AND EXTERIOR DESIGN SPECIFICATIONS, LOCATION, SIZE, DESIGN FEATURES, SERVICES, AMENITIES AND PRICING WITHOUT PRIOR NOTICE. ALL DIMENSIONS AND SQUARE FOOTAGES ARE APPROXIMATE AND MODIFICATIONS MAY VARY BY UNIT.

STATESMAN
what a beautiful way to live!

2700 N.W. Pine Cone Drive, Issaquah, WA, 98027
Telephone: (425) 830-8971 www.bentleyhousing.com

11-17-08

